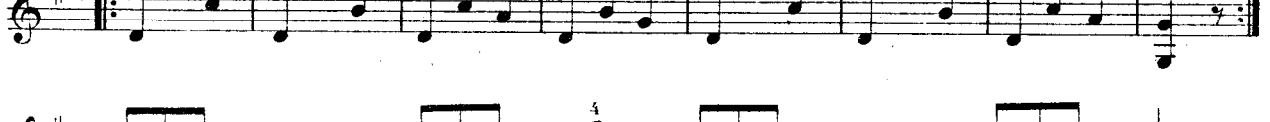


**Tonleiter in G dur.**

Vorzeichnung ein Kreuz vor der Note *f*; wir haben daher in der Gdur Tonart überall statt *f fis* zu spielen.



**Akkorde und Übungen.**



Walzer.

Musical score for 'Walzer' in 3/4 time, key of D major. The first staff begins with a piano (*p*) dynamic and features a melodic line with eighth notes. The second staff provides harmonic accompaniment with chords and some melodic fragments. Dynamics include *mf* and *f*. The piece concludes with a double bar line.

Italienischer Marsch.

Musical score for 'Italienischer Marsch' in common time, key of D major. The first staff starts with a forte (*f*) dynamic and contains a melodic line. The second and third staves feature a rhythmic accompaniment of chords. The fourth staff continues the melodic line. Dynamics include *f*, *mf*, and *p*. The piece concludes with a double bar line.