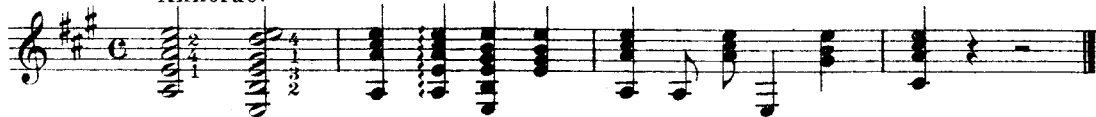


Tonleiter in A dur.

Vorzeichnung drei Kreuz, vor *f*, e. u. g.



Akkorde.



Übungen.



Walzer.



Schottisch.

Musical score for Schottisch, featuring four staves of music in 2/4 time. The key signature has three sharps (F#, C#, G#). The first staff begins with a piano (*p*) dynamic and includes a mezzo-forte (*mf*) dynamic marking. The second staff includes forte (*f*) and piano (*p*) markings. The third staff includes piano (*p*) markings. The fourth staff continues the rhythmic pattern.

Galoppade.

Musical score for Galoppade, featuring three staves of music in 2/4 time. The key signature has three sharps (F#, C#, G#). The first staff begins with a forte (*f*) dynamic and includes accents and slurs. The second staff includes mezzo-forte (*mf*) and forte (*f*) markings. The third staff includes piano (*p*) markings.

Walzer.

Musical score for Walzer, featuring three staves of music in 3/4 time. The key signature has three sharps (F#, C#, G#). The first staff begins with a forte (*f*) dynamic. The second staff includes piano (*p*) markings. The third staff includes mezzo-forte (*mf*) markings.

Walzer.

Musical score for Walzer, featuring two staves of music in 3/4 time. The key signature has three sharps (F#, C#, G#). The first staff begins with a mezzo-forte (*mf*) dynamic. The second staff includes piano (*p*) and mezzo-forte (*mf*) markings.

Galoppade.

Musical score for Galoppade, consisting of two staves. The top staff is in treble clef and the bottom staff is in bass clef. The key signature has two sharps (F# and C#) and the time signature is 2/4. The top staff begins with a dynamic marking of *mf*. The bottom staff begins with a dynamic marking of *p* and includes a *crese.* marking. The music features a rhythmic pattern of eighth and sixteenth notes.

Walzer.

Musical score for Walzer, consisting of three staves. The top staff is in treble clef and the bottom two staves are in bass clef. The key signature has two sharps (F# and C#) and the time signature is 3/4. The top staff begins with a dynamic marking of *p* and includes a triplet of eighth notes. The middle staff begins with a dynamic marking of *mf*. The bottom staff begins with a dynamic marking of *p* and includes *crese.* and *mf* markings. The music features a waltz-like melody with triplets and a steady bass accompaniment.